

# Golay Cell



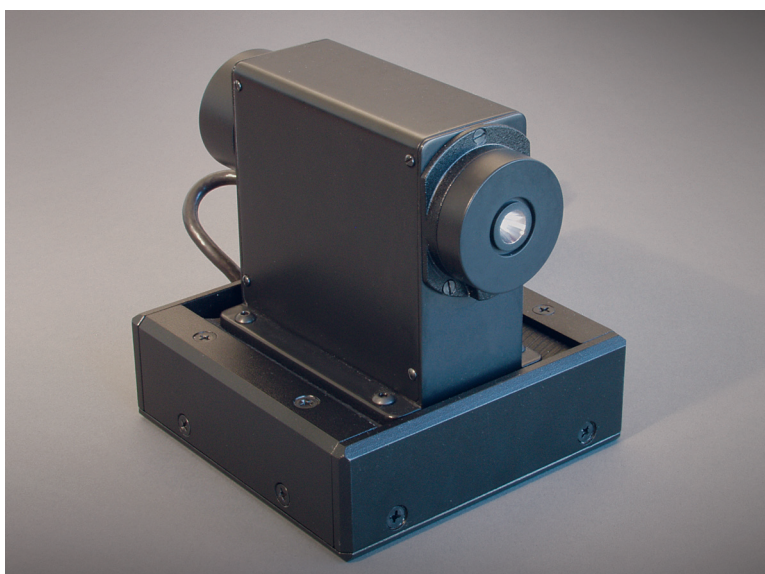
## Product Description:

Golay Cell is an opto-acoustic detector designed for operation in the spectral range 0.2-20THz. It is equipped with a 6 mm diameter polyethylene or diamond input window that provides for high transparency at frequencies up to 20 THz. The golay cell comes with a built-in preamplifier and vibration isolating base to minimize low frequency noise.

### *Key features include:*

- Operating range: 0.1-20 THz
- Diamond or polyethylene windows available
- NEP with lock-in: ~10 nW

## Transmission Setup:



## Product Specifications:

PARAMETERS	VALUES
Responsivity, V/W	see calibration data on the next page
Sensitivity, W/Hz <sup>1/2</sup>	~10 <sup>-8</sup>
Maximum modulation frequency	70 Hz
Dynamic range	0.1 μW- 500 μW
Rise time, ms	25
Maximum output voltage, V	1.5
Input window diameter, mm	6
Dimensions, mm	135x115x120

# Golay Cell



## Example Responsivities:

